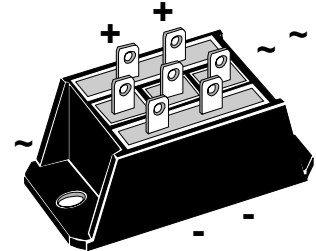
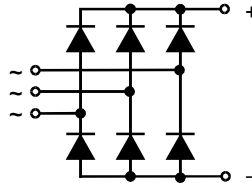


Three Phase Rectifier Bridge

$I_{dAV} = 58 \text{ A}$
 $V_{RRM} = 800-1800 \text{ V}$

V_{RSM} V	V_{RRM} V	Type
900	800	VUO 50-08NO3
1300	1200	VUO 50-12NO3
1500	1400	VUO 50-14NO3
1700	1600	VUO 50-16NO3
1900	1800	VUO 50-18NO3*

* delivery time on request



Symbol	Test Conditions	Maximum Ratings	
I_{dAV} ①	$T_C = 85^\circ\text{C}$, module	58 A	
I_{dAVM} ①	module	75 A	
I_{FSM}	$T_{VJ} = 45^\circ\text{C}$; $V_R = 0$	t = 10 ms (50 Hz), sine t = 8.3 ms (60 Hz), sine	500 A 525 A
	$T_{VJ} = T_{VJM}$; $V_R = 0$	t = 10 ms (50 Hz), sine t = 8.3 ms (60 Hz), sine	415 A 440 A
I^2t	$T_{VJ} = 45^\circ\text{C}$; $V_R = 0$	t = 10 ms (50 Hz), sine t = 8.3 ms (60 Hz), sine	1250 A ² s 1160 A ² s
	$T_{VJ} = T_{VJM}$; $V_R = 0$	t = 10 ms (50 Hz), sine t = 8.3 ms (60 Hz), sine	860 A ² s 810 A ² s
T_{VJ}		-40...+125	°C
T_{VJM}		125	°C
T_{stg}		-40...+125	°C
V_{ISOL}	50/60 Hz, RMS	t = 1 min	3000 V~
	$I_{ISOL} \leq 1 \text{ mA}$	t = 1 s	3600 V~
M_d	Mounting torque (M5)	(10-32 UNF)	2-2.5 Nm 18-22 lb.in.
			50 g
Weight	typ.		

Features

- Package with DCB ceramic base plate
- Isolation voltage 3600 V~
- Planar passivated chips
- Blocking voltage up to 1800 V
- Low forward voltage drop
- ¼" fast-on terminals
- UL registered E 72873

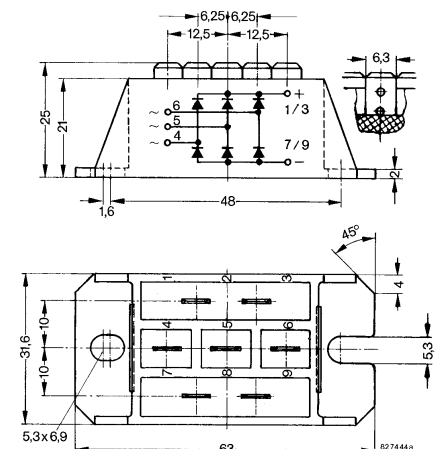
Applications

- Supplies for DC power equipment
- Input rectifiers for PWM inverter
- Battery DC power supplies
- Rectifier for DC motors field current

Advantages

- Easy to mount with two screws
- Space and weight savings
- Improved temperature and power cycling

Dimensions in mm (1 mm = 0.0394")



Symbol	Test Conditions	Characteristic Values	
I_R	$V_R = V_{RRM}$	$T_{VJ} = 25^\circ\text{C}$	0.3 mA
	$V_R = V_{RRM}$	$T_{VJ} = T_{VJM}$	5 mA
V_F	$I_F = 150 \text{ A}$; $T_{VJ} = 25^\circ\text{C}$		1.9 V
V_{T0}	For power-loss calculations only		0.9 V
r_T			6.0 mΩ
R_{thJC}	per diode, DC current		1.62 K/W
	per module		0.27 K/W
R_{thJH}	per diode, DC current		2.22 K/W
	per module		0.37 K/W
d_s	Creeping distance on surface		10 mm
d_A	Creepage distance in air		9.4 mm
a	Max. allowable acceleration		50 m/s ²

Data according to IEC 60747 and refer to a single diode unless otherwise stated.

① for resistive load at bridge output

IXYS reserves the right to change limits, test conditions and dimensions.

Use output terminals in parallel connection!