

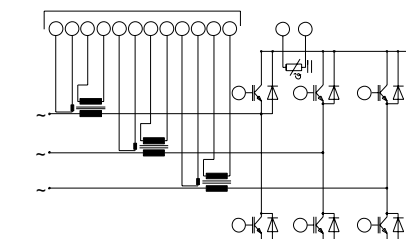
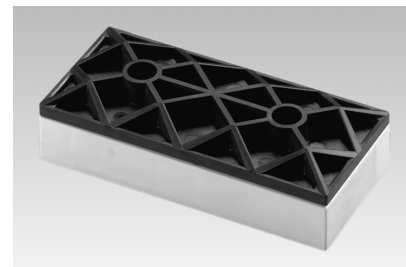
SKiiP 83 AC 12 - SKiiP 83 AC 12 I

Absolute Maximum Ratings			
Symbol	Conditions ¹⁾	Values	Units
V_{CES}		1200	V
V_{GES}		± 20	V
I_C	$T_{heatsink} = 25 / 80 \text{ }^\circ\text{C}$	125 / 85	A
I_{CM}	$t_p < 1 \text{ ms}; T_{heatsink} = 25 / 80 \text{ }^\circ\text{C}$	250 / 170	A
T_j		$-40 \dots +150$	$^\circ\text{C}$
T_{stg}		$-40 \dots +125$	$^\circ\text{C}$
V_{isol}	AC, 1 min.	2500	V
Inverse Diode			
$I_F = -I_C$	$T_{heatsink} = 25 / 80 \text{ }^\circ\text{C}$	80 / 53	A
$I_{FM} = -I_{CM}$	$t_p < 1 \text{ ms}; T_{heatsink} = 25 / 80 \text{ }^\circ\text{C}$	160 / 106	A
I_{FSM}	$t_p = 10 \text{ ms}; \text{sin.}, T_j = 25 \text{ }^\circ\text{C}$	720	A
I^2t	$t_p = 10 \text{ ms}; \text{sin.}, T_j = 25 \text{ }^\circ\text{C}$	2600	A^2s

Characteristics					
Symbol	Conditions ¹⁾	min.	typ.	max.	Units
IGBT - Inverter					
V_{CEsat}	$I_C = 100 \text{ A}, T_j = 25 (125) \text{ }^\circ\text{C}$	–	2,5(3,1)	3,0(3,7)	V
$t_{d(on)}$	$V_{CC} = 600 \text{ V}; V_{GE} = \pm 15 \text{ V}$	–	50	100	ns
t_r	$I_C = 100 \text{ A}; T_j = 125 \text{ }^\circ\text{C}$	–	55	110	ns
$t_{d(off)}$	$R_{gon} = R_{goff} = 11 \text{ }^\Omega$	–	400	600	ns
t_f	inductive load	–	70	100	ns
$E_{on} + E_{off}$		–	27	–	mJ
C_{ies}	$V_{CE} = 25 \text{ V}; V_{GE} = 0 \text{ V}, 1 \text{ MHz}$	–	6,6	–	nF
R_{thjh}	per IGBT	–	–	0,25	K/W
Diode ²⁾ - Inverter					
$V_F = V_{EC}$	$I_F = 75 \text{ A}, T_j = 25 (125) \text{ }^\circ\text{C}$	–	2,0(1,8)	2,5(2,3)	V
V_{TO}	$T_j = 125 \text{ }^\circ\text{C}$	–	1,0	1,2	V
r_T	$T_j = 125 \text{ }^\circ\text{C}$	–	11	15	m Ω
I_{RRM}	$I_F = 75 \text{ A}, V_R = -600 \text{ V}$	–	45	–	A
Q_{rr}	$di_f/dt = -800 \text{ A}/\mu\text{s}$	–	11	–	μC
E_{off}	$V_{GE} = 0 \text{ V}, T_j = 125 \text{ }^\circ\text{C}$	–	3,0	–	mJ
R_{thjh}	per diode	–	–	0,8	K/W
Current sensor for three phase output ac current (SKiiP 83 AC 12 I)					
$I_{p \text{ RMS}}$	Continuous current, $T = 100 \text{ }^\circ\text{C}, V_{suppl} = \pm 15 \text{ V}$	–	50	–	A
$I_{pmax \text{ RMS}}$	$t \leq 2 \text{ s}$	–	–	80	A
$I_{p \text{ peak}}$	$t \leq 10 \text{ } \mu\text{s}$	–	1000	–	A
R_{out}	terminating resistance	–	50	–	Ω
$I_s \text{ RMS}$	rated sensor current at $I_p = 50 \text{ A}_{RMS}$	–	25	–	mA
$I_p : I_s$	transfer ratio	–	1 : 2000	–	
Offset _{error}	$I_p = 0 \text{ A}, T = -40 \dots 100 \text{ }^\circ\text{C}$	–	$\pm 0,2$	–	mA
Linearity		–	0,1	–	%
delay time	$I_p =$ 10 % – 80 %	–	< 1	–	μs
	90 % – 20 %	–	< 1	–	μs
Bandwidth		–	0 – 100	(–3dB)	kHz
Temperature Sensor					
R_{TS}	$T = 25 / 100 \text{ }^\circ\text{C}$	–	1000 / 1670	–	Ω
Mechanical Data					
M_1	case to heatsink, SI Units	2,5	–	3,5	Nm
Case	mechanical outline see pages B 16 – 11 and B 16 – 12	–	M8	–	

MiniSKiiP 8 SEMIKRON integrated intelligent Power SKiiP 83 AC 12 SKiiP 83 AC 12 I ³⁾ SKiiP 83 AC 12 IS ⁴⁾ IGBT 3-phase bridge inverter

Case M8



UL recognized file no. E63532

- more detailed characteristics of current sensors and temperature sensor please refer to part A
- common characteristics see page B 16 – 4

Options

- also available with powerful free-wheeling diodes. Data sheet on request

- ¹⁾ $T_{heatsink} = 25 \text{ }^\circ\text{C}$, unless otherwise specified
- ²⁾ CAL = Controlled Axial Lifetime Technology (soft and fast recovery)
- ³⁾ With integrated closed loop current sensors
- ⁴⁾ Extended current range, data sheet on request

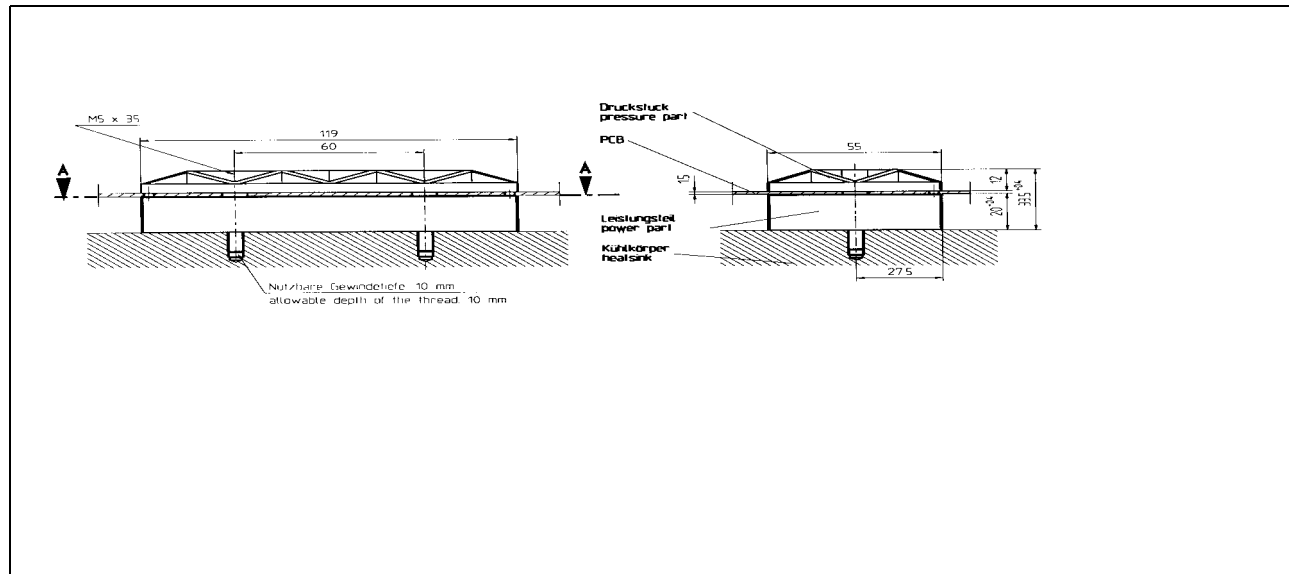
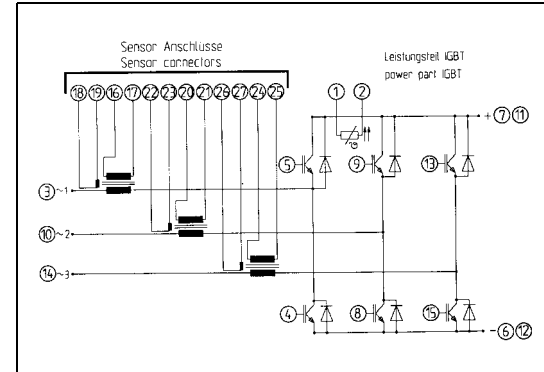
MiniSKiiP 8

Inverter part

SKiiP 82 AC 06 ...
 SKiiP 83 AC 06 ...
 SKiiP 81 AC 12 ...
 SKiiP 82 AC 12 ...
 SKiiP 83 AC 12 ...

Circuit
 Case M8

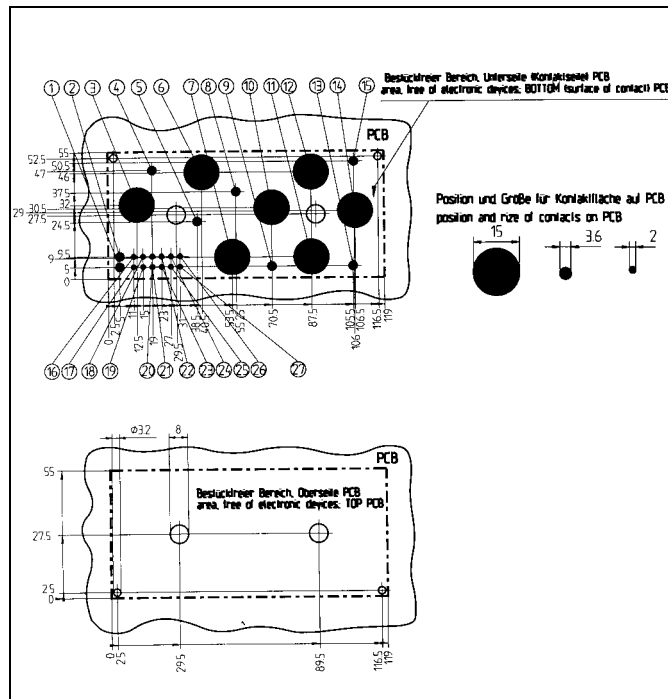
Note: The current sensors are available only by option I



MiniSKiiP 8

Inverter part

SKiiP 82 AC 06 ... Case M8
 SKiiP 83 AC 06 ... Layout and connections for the
 SKiiP 81 AC 12 ... customer's printed circuit board
 SKiiP 82 AC 12 ...
 SKiiP 83 AC 12 ...



pin	connection	optional
1	T +	
2	T -	
3	~1 ET1 CB1	
4	GB1	
5	GT1	
6	- EB1 EB2 EB3	
7	+ CT1 CT2 CT3	
8	GB2	
9	GT2	
10	~2 ET2 CB2	
11	+ CT1 CT2 CT3	
12	- EB1 EB2 EB3	
13	GT3	
14	~3 ET3 CB3	
15	GB3	
16	K1 for ~1	X
17	K2 for ~1	X
18	S1 for ~1	X
19	S2 for ~1	X
20	K1 for ~2	X
21	K2 for ~2	X
22	S1 for ~2	X
23	S2 for ~2	X
24	K1 for ~3	X
25	K2 for ~3	X
26	S1 for ~3	X
27	S2 for ~3	X