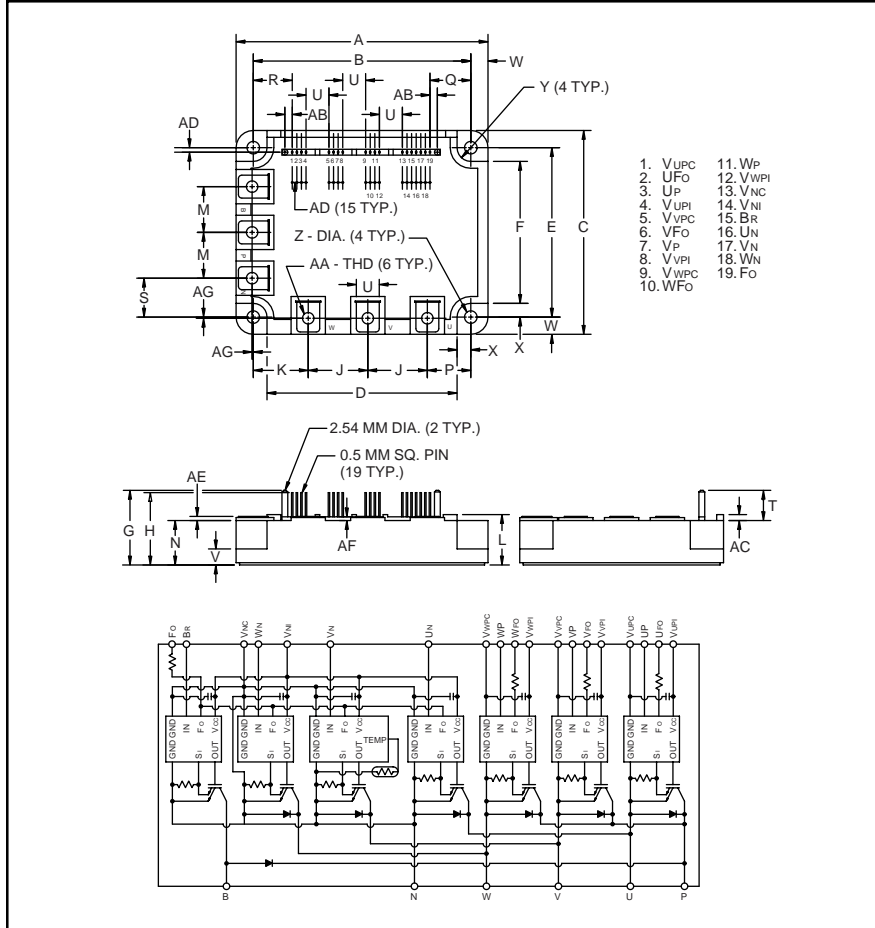


### Intellimod™ Module Three Phase + Brake IGBT Inverter Output 100 Amperes/600 Volts



#### Description:

Powerex Intellimod™ Intelligent Power Modules are isolated base modules designed for power switching applications operating at frequencies to 20kHz. Built-in control circuits provide optimum gate drive and protection for the IGBT and free-wheel diode power devices.

#### Features:

- Complete Output Power Circuit
- Gate Drive Circuit
- Protection Logic
  - Short Circuit
  - Over Current
  - Over Temperature
  - Under Voltage

#### Applications:

- Inverters
- UPS
- Motion/Servo Control
- Power Supplies

#### Ordering Information:

Example: Select the complete part number from the table below -i.e. PM100RSA060 is a 600V, 100 Ampere Intellimod™ Intelligent Power Module.

Outline Drawing and Circuit Diagram

Dimensions	Inches	Millimeters
A	4.33±0.04	110.0±1.0
B	3.74±0.02	95.0±0.5
C	3.50±0.04	89.0±1.0
D	3.27	83.0
E	2.91±0.02	74.0±0.5
F	2.44	62.0
G	1.28	32.6
H	1.24	31.6
J	1.02	26.0
K	0.94	24.0
L	0.87 +0.06/-0.0	22.0 +1.5/-0.0
M	0.79	20.0
N	0.76	19.4
P	0.75	19.0
Q	0.708	17.98
R	0.670	17.02

Dimensions	Inches	Millimeters
S	0.67	17.0
T	0.52	13.2
U	0.39	10.0
V	0.32	8.0
W	0.30	7.5
X	0.24	6.0
Y	0.24 Rad.	Rad. 6.0
Z	0.22 Dia.	Dia. 5.5
AA	Metric M5	M5
AB	0.127	3.22
AC	0.10	2.6
AD	0.08	2.0
AE	0.07	1.8
AF	0.06	1.6
AG	0.02	0.5

Type	Current Rating Amperes	V <sub>CES</sub> Volts (x 10)
PM	100	60



Powerex, Inc., 200 Hillis Street, Youngwood, Pennsylvania 15697-1800 (724) 925-7272

**PM100RSA060**  
**Intellimod™ Module**  
**Three Phase + Brake IGBT Inverter Output**  
**100 Amperes/600 Volts**

**Absolute Maximum Ratings,  $T_j = 25^\circ\text{C}$  unless otherwise specified**

Characteristics	Symbol	PM100RSA060	Units
Power Device Junction Temperature	$T_j$	-20 to 150	$^\circ\text{C}$
Storage Temperature	$T_{stg}$	-40 to 125	$^\circ\text{C}$
Case Operating Temperature	$T_C$	-20 to 100	$^\circ\text{C}$
Mounting Torque, M5 Mounting Screws	—	17	in-lb
Mounting Torque, M5 Main Terminal Screw	—	17	in-lb
Module Weight (Typical)	—	550	Grams
Supply Voltage Protected by OC and SC ( $V_D = 13.5 - 16.5\text{V}$ , Inverter Part, $T_j = 125^\circ\text{C}$ )	$V_{CC(prot.)}$	400	Volts
Isolation Voltage, AC 1 minute, 60Hz Sinusoidal	$V_{RMS}$	2500	Volts

**Control Sector**

Supply Voltage Applied between ( $V_{UP1}-V_{UPC}$ , $V_{VP1}-V_{VPC}$ , $V_{WP1}-V_{WPC}$ , $V_{N1}-V_{NC}$ )	$V_D$	20	Volts
Input Voltage Applied between ( $U_P$ , $V_P$ , $W_P$ , $U_N$ , $V_N$ , $W_N$ , $B_r$ )	$V_{CIN}$	20	Volts
Fault Output Supply Voltage	$V_{FO}$	20	Volts
Fault Output Current	$I_{FO}$	20	mA

**IGBT Inverter Sector**

Collector-Emitter Voltage ( $V_D = 15\text{V}$ , $V_{CIN} = 15\text{V}$ )	$V_{CES}$	600	Volts
Collector Current, $\pm$	$I_C$	100	Amperes
Peak Collector Current, $\pm$	$I_{CP}$	200	Amperes
Supply Voltage (Applied between P - N)	$V_{CC}$	450	Volts
Supply Voltage, Surge (Applied between P - N)	$V_{CC(surge)}$	500	Volts
Collector Dissipation	$P_C$	403	Watts

**Brake Sector**

Collector-Emitter Voltage	$V_{CES}$	600	Volts
Collector Current, $\pm$	$I_C$	30	Amperes
Peak Collector Current, $\pm$	$I_{CP}$	60	Amperes
Supply Voltage (Applied between P - N)	$V_{CC}$	450	Volts
Supply Voltage, Surge (Applied between P - N)	$V_{CC(surge)}$	500	Volts
Collector Dissipation	$P_C$	208	Watts
Diode Forward Current	$I_F$	30	Amperes
Diode DC Reverse Voltage	$V_{R(DC)}$	600	Volts

**PM100RSA060**  
**Intellimod™ Module**  
**Three Phase + Brake IGBT Inverter Output**  
**100 Amperes/600 Volts**

## Electrical and Mechanical Characteristics, $T_j = 25^\circ\text{C}$ unless otherwise specified

Characteristics	Symbol	Test Conditions	Min.	Typ.	Max.	Units
<b>Control Sector</b>						
Over Current Trip Level Inverter Part	OC	$-20^\circ\text{C} \leq T \leq 125^\circ\text{C}$	158	240	—	Amperes
Over Current Trip Level Brake Part			39	53	—	Amperes
Short Circuit Trip Level Inverter Part	SC	$-20^\circ\text{C} \leq T \leq 125^\circ\text{C}$	—	360	—	Amperes
Short Circuit Trip Level Brake Part			—	79	—	Amperes
Over Current Delay Time	$t_{\text{off}}(\text{OC})$	$V_D = 15\text{V}$	—	10	—	$\mu\text{S}$
Over Temperature Protection	OT	Trip Level	111	118	125	$^\circ\text{C}$
	$\text{OT}_R$	Reset Level	—	100	—	$^\circ\text{C}$
Supply Circuit Under Voltage Protection	UV	Trip Level	11.5	12.0	12.5	Volts
	$\text{UV}_R$	Reset Level	—	12.5	—	Volts
Supply Voltage	$V_D$	Applied between $V_{\text{UP1}}-V_{\text{UPC}}$ , $V_{\text{VP1}}-V_{\text{VPC}}$ , $V_{\text{WP1}}-V_{\text{WPC}}$ , $V_{\text{N1}}-V_{\text{NC}}$	13.5	15	16.5	Volts
Circuit Current	$I_D$	$V_D = 15\text{V}$ , $V_{\text{CIN}} = 15\text{V}$ , $V_{\text{N1}}-V_{\text{NC}}$	—	44	60	mA
		$V_D = 15\text{V}$ , $V_{\text{CIN}} = 15\text{V}$ , $V_{\text{XP1}}-V_{\text{XPC}}$	—	13	18	mA
Input ON Threshold Voltage	$V_{\text{CIN(on)}}$	Applied between	1.2	1.5	1.8	Volts
Input OFF Threshold Voltage	$V_{\text{CIN(off)}}$	$U_P, V_P, W_P, U_N, V_N, W_N, B_r$	1.7	2.0	2.3	Volts
PWM Input Frequency	$f_{\text{PWM}}$	3- $\emptyset$ Sinusoidal	—	15	20	kHz
Fault Output Current	$I_{\text{FO(H)}}$	$V_D = 15\text{V}$ , $V_{\text{FO}} = 15\text{V}$	—	—	0.01	mA
	$I_{\text{FO(L)}}$	$V_D = 15\text{V}$ , $V_{\text{FO}} = 15\text{V}$	—	10	15	mA
Minimum Fault Output Pulse Width	$t_{\text{FO}}$	$V_D = 15\text{V}$	1.0	1.8	—	mS



Powerex, Inc., 200 Hillis Street, Youngwood, Pennsylvania 15697-1800 (724) 925-7272

**PM100RSA060**  
**Intellimod™ Module**  
**Three Phase + Brake IGBT Inverter Output**  
**100 Amperes/600 Volts**

**Electrical and Mechanical Characteristics,  $T_j = 25^\circ\text{C}$  unless otherwise specified**

Characteristics	Symbol	Test Conditions	Min.	Typ.	Max.	Units
-----------------	--------	-----------------	------	------	------	-------

**IGBT Inverter Sector**

Collector Cutoff Current	$I_{CES}$	$V_{CE} = V_{CES}, T_j = 25^\circ\text{C}$	—	—	1.0	mA
		$V_{CE} = V_{CES}, T_j = 125^\circ\text{C}$	—	—	10	mA
Diode Forward Voltage	$V_{FM}$	$-I_C = 100\text{A}, V_D = 15\text{V}, V_{CIN} = 5\text{V}$	—	2.2	3.3	Volts
Collector-Emitter Saturation Voltage	$V_{CE(sat)}$	$V_D = 15\text{V}, I_{CIN} = 0\text{V}, I_C = 100\text{A}$	—	1.8	2.7	Volts
		$V_D = 15\text{V}, V_{CIN} = 0\text{V}, I_C = 100\text{A}, T_j = 125^\circ\text{C}$	—	1.75	2.63	Volts
Inductive Load Switching Times	$t_{on}$		0.4	0.8	2.0	$\mu\text{S}$
	$t_{rr}$	$V_D = 15\text{V}, V_{CIN} = 0 \sim 15\text{V}$	—	0.15	0.3	$\mu\text{S}$
	$t_{C(on)}$	$V_{CC} = 300\text{V}, I_C = 100\text{A}$	—	0.4	1.0	$\mu\text{S}$
	$t_{off}$	$T_j = 125^\circ\text{C}$	—	2.0	2.9	$\mu\text{S}$
	$t_{C(off)}$		—	0.6	1.2	$\mu\text{S}$

**Brake Sector**

Collector-Emitter Saturation Voltage	$V_{CE(sat)}$	$V_D = 15\text{V}, V_{CIN} = 0\text{V}, I_C = 100\text{A}, T_j = 25^\circ\text{C}$	—	2.7	3.5	Volts
		$V_D = 15\text{V}, V_{CIN} = 0\text{V}, I_C = 100\text{A}, T_j = 125^\circ\text{C}$	—	3.1	4.0	Volts
Diode Forward Voltage	$V_{FM}$	$-I_C = 30\text{A}, V_D = 15\text{V}, V_{CIN} = 5\text{V}$	—	1.7	2.7	Volts
Collector Cutoff Current	$I_{CES}$	$V_{CE} = V_{CES}, T_j = 25^\circ\text{C}$	—	—	1	mA
		$V_{CE} = V_{CES}, T_j = 125^\circ\text{C}$	—	—	10	mA



Powerex, Inc., 200 Hillis Street, Youngwood, Pennsylvania 15697-1800 (724) 925-7272

**PM100RSA060**  
**Intellimod™ Module**  
**Three Phase + Brake IGBT Inverter Output**  
**100 Amperes/600 Volts**

### Thermal Characteristics

Characteristic	Symbol	Condition	Min.	Typ.	Max.	Units
Junction to Case Thermal Resistance	$R_{th(j-c)Q}$	Each Inverter IGBT	—	—	0.31	°C/Watt
	$R_{th(j-c)D}$	Each Inverter FWDi	—	—	0.7	°C/Watt
	$R_{th(c-f)Q}$	Each Brake IGBT	—	—	0.6	°C/Watt
	$R_{th(c-f)D}$	Each Brake FWDi	—	—	1.5	°C/Watt
Contact Thermal Resistance	$R_{th(c-f)}$	Case to Fin Per Module, Thermal Grease Applied	—	—	0.027	°C/Watt

### Recommended Conditions for Use

Characteristic	Symbol	Condition	Value	Units
Supply Voltage	$V_{CC}$	Applied across P-N Terminals	0 ~ 400	Volts
	$V_D$	Applied between $V_{UP1}$ - $V_{UPC}$ , $V_{N1}$ - $V_{NC}$ , $V_{VP1}$ - $V_{VPC}$ , $V_{WP1}$ - $V_{WPC}$	$15 \pm 1.5$	Volts
Input ON Voltage	$V_{CIN(on)}$	Applied between	0 ~ 0.8	Volts
Input OFF Voltage	$V_{CIN(off)}$	$U_P, V_P, W_P, U_N, V_N, W_N, B_r$	$4.0 \sim V_D$	Volts
PWM Input Frequency	$f_{PWM}$	Using Application Circuit	5 ~ 20	kHz
Minimum Dead Time	$t_{DEAD}$	Input Signal	$\geq 2.5$	$\mu S$