

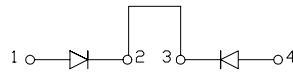
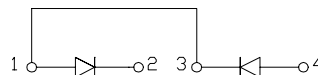
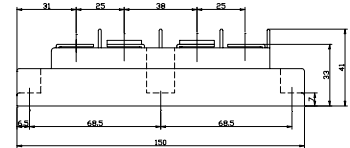
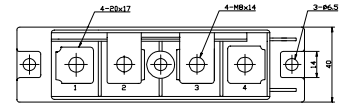
DIODE MODULE 150A/800V

PC1508 PD1508
FEATURES

- * Isolated Base
- * Dual Diodes Cathode Common and Cascaded Circuit
- * High Surge Capability
- * UL Recognized, File No. E187184

TYPICAL APPLICATIONS

- * Rectified For General Use

PC

PD

OUTLINE DRAWING

Maximum Ratings

Approx Net Weight:480g

Parameter	Symbol	Type / Grade	Unit
		PC1508 / PD1508	
Repetitive Peak Reverse Voltage *1	V_{RRM}	800	V
Non Repetitive Peak Reverse Voltage *1	V_{RSM}	900	

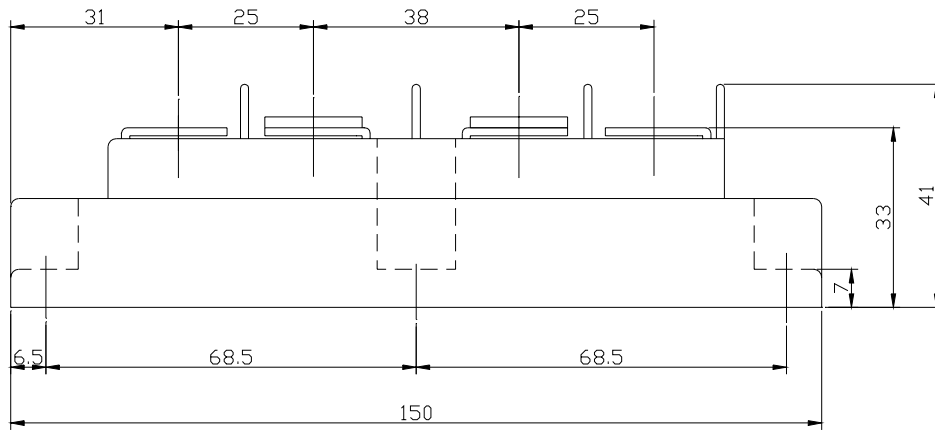
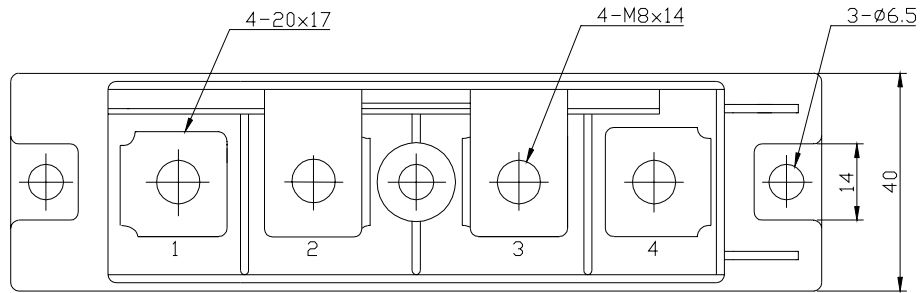
Parameter	Symbol	Conditions	Max Rated Value	Unit	
Average Rectified Output Current *1	$I_{O(AV)}$	50 Hz Half Sine Wave condition $T_c=103^{\circ}C$	150	A	
RMS Forward Current *1	$I_{F(RMS)}$		235	A	
Surge Forward Current *1	I_{FSM}	50 Hz Half Sine Wave, 1cycle, Non-Repetitive	3200	A	
I Squared t *1	I^2t	2msec to 10msec	51200	A^2s	
Operating Junction Temperature Range	T_{jw}		-40 to +150	$^{\circ}C$	
Storage Temperature Range	T_{stg}		-40 to +125	$^{\circ}C$	
Isolation Voltage	V_{iso}	Base Plate to Terminals, AC1min	2000	V	
Mounting Torque	Case Mounting	F_{tor}	M6 Screw	2.5 to 3.5	N.m
	Terminals		M8 Screw	9.0 to 10.0	

Electrical • Thermal Characteristics

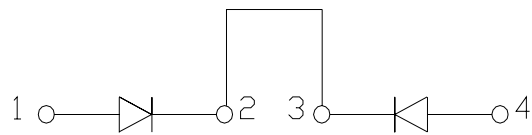
Characteristics	Symbol	Test Conditions	Max.	Unit
Peak Reverse Current *1	I_{RM}	$V_{RM}= V_{RRM}, T_j= 150^{\circ}C$	15	mA
Peak Forward Voltage *1	V_{FM}	$I_{FM}= 450A, T_j=25^{\circ}C$	1.28	V
Thermal Resistance *1	$R_{th(j-c)}$	Junction to Case	0.25	$^{\circ}C/W$
	$R_{th(c-f)}$	Case to Fin, Greased	0.1	

*1: Value Per 1Arm

PC/PD1508 OUTLINE DRAWING (Dimensions in mm)



PC



PD

