

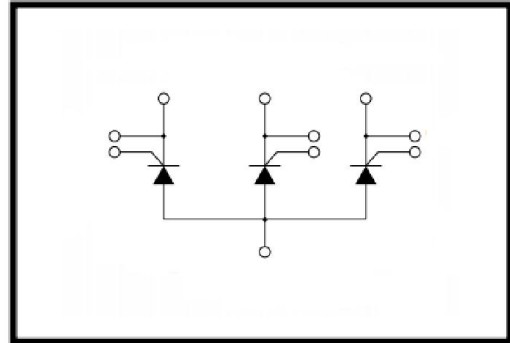
Features

- **Non-Insulated Type**
- **Mounting Base as Common Anode Terminals**
- **High Surge Capability**
- **Glass Passivated Chips**
- **International Standard Package**
- **Gate-Cathode Two Pins**



Applications

- **Welding power Supply**
- **Various DC power Supply**
- **Low Voltage 3 Phase Rectifier Applications**



Advantages

- **Space and Weight Savings**
- **Improved Temperature and Power Cycling**
- **Simple Mounting with Screws**

Absolute Maximum Ratings

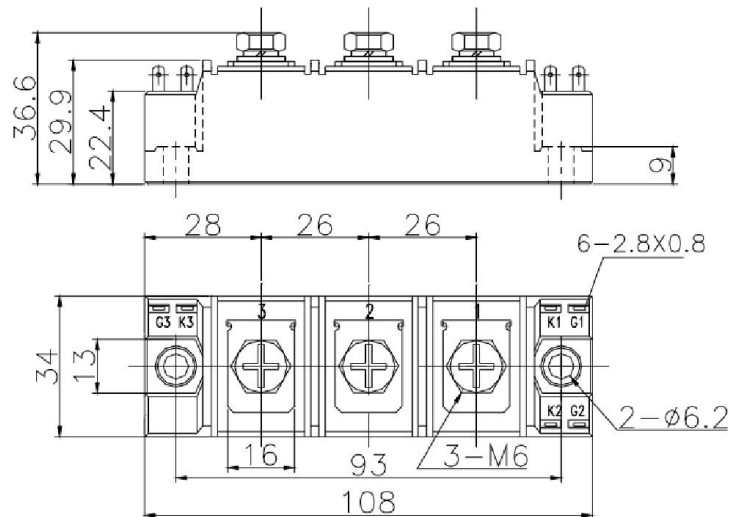
T_C=25°C unless otherwise specified

SYMBOL	PARAMETER	TEST CONDITIONS	T _J (°C)	VALUE			UNIT
				Min.	Typ.	Max.	
I _{T(AV)}	Average on-state current	180° half sinewave 50Hz Single side cooled; T _J =90°C	125			150	A
I _{T(RMS)}	R.M.S. on-state current	Single side cooled; T _J =90°C	125			236	A
V _{DRM} V _{RRM}	Repetitive peak offstate voltage Repetitive peak reverse voltage	V _{DRM} &V _{RRM} ; t _p =10ms V _{DSM} & V _{RSM} = V _{DRM} &V _{RRM} +100V Respectively	125	400	600	700	V
I _{DRM} I _{RRM}	Repetitive peak current	at V _{DRM} at V _{RRM}	125			12	mA
I _{TSM}	Surge on-state current	10ms; half sine wave	125			5.10	KA
I ² t	I ² t for fusing	V _R =60%V _{RRM}	125			133	A ² s*10 ³
V _{TO}	Threshold voltage		125			0.80	V
R _T	On-state stop resistance					1.37	mΩ
V _{TM}	Peak on-state voltage	I _{TM} =450A	125			1.3	V
F _m	Main terminal screws M6				4.0		N.m
	Mounting screws M6				4.0		N.m
T _{STG}	Storage temperature			-40		140	°C
Wt	Weight	Typical			280		g

Electrical And Thermal Characteristics T_C=25°C unless otherwise specified

SYMBOL	PARAMETER	TEST CONDITIONS	T _J (°C)	VALUE			UNIT
				Min.	Typ.	Max.	
dv/dt	Critical rate of rise of off-state voltage	V _{DM} =67%V _{DRM}	125			800	V/us
di/dt	Critical rate of rise of on-state current	V _{DM} =67%V _{DRM} ; tr <0.5us, Gate source I _G =1.5A	125			100	A/us
I _{GT}	Gate trigger current	V _A =12V; I _A =1A		30		150	mA
V _{GT}	Gate trigger voltage			1.0		2.5	V
I _H	Holding current			20		100	mA
V _{GD}	Non-trigger gate voltage	At 67%V _{DRM}	125			0.2	V
R _{th(j-c)}	Thermal resistance Junction to case	180° half sinewave 50Hz Single side cooled				0.13	°C/W

Package Outline (Dimensions in mm)

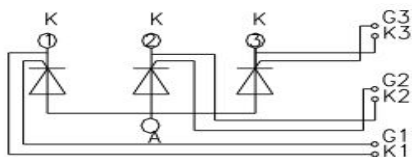


Ordering Information

MTG	150	06	None / P
①	②	③	④

- ①---- Device Type: MTG / MTY please see the attached internal configurations.
- ②----Current Rating = I_{T(AV)}, Average on-state DC Output Current: 50A—500A
- ③----Voltage Code X100 = V_{RRM}, Maximum Repetitive Peak Reverse Voltage: 300V—1800V
- ④----Package Case Option: None = Normal Standard Package Case; P = Terminal with PIN

MTG



MTY

