

Technische Information / Technical Information

IGBT-Module
IGBT-Modules

FF 400 R 33 KF2

eupec



Datenblatt data sheet

Höchstzulässige Werte / Maximum rated values

Elektrische Eigenschaften / Electrical properties

Kollektor-Emitter-Sperrspannung collector-emitter voltage	$T_j = 25^\circ\text{C}$ $T_j = -25^\circ\text{C}$	V_{CES}	3300 3300	V
Kollektor-Dauergleichstrom DC-collector current	$T_C = 80^\circ\text{C}$ $T_C = 25^\circ\text{C}$	$I_{\text{C,nom.}}$ I_{C}	400 660	A A
Periodischer Kollektor Spitzenstrom repetitive peak collector current	$t_p = 1 \text{ ms}, T_C = 80^\circ\text{C}$	I_{CRM}	800	A
Gesamt-Verlustleistung total power dissipation	$T_C = 25^\circ\text{C}, \text{ Transistor}$	P_{Tot}	4,8	kW
Gate-Emitter-Spitzenspannung gate-emitter peak voltage		V_{GES}	+/- 20V	V
Dauergleichstrom DC forward current		I_{F}	400	A
Periodischer Spitzenstrom repetitive peak forw. current	$t_p = 1 \text{ ms}$	I_{FRM}	800	A
Grenzlastintegral der Diode I^2t - value, Diode	$V_R = 0\text{V}, t_p = 10\text{ms}, T_{vj} = 125^\circ\text{C}$	I^2t	55.600	A^2s
Spitzenverlustleistung der Diode maximum power dissipation diode	$T_j = 125^\circ\text{C}$	P_{RQM}	400	kW
Isolations-Prüfspannung insulation test voltage	RMS, $f = 50 \text{ Hz}, t = 1 \text{ min.}$	V_{ISOL}	6.000	V
Teilentladungs-Aussetzspannung partial discharge extinction voltage	RMS, $f = 50 \text{ Hz}, Q_{\text{PD}} \leq 10 \text{ pC}$ (acc. to IEC 1287)	V_{ISOL}	2.600	V

Charakteristische Werte / Characteristic values

Transistor / Transistor

			min.	typ.	max.	
Kollektor-Emitter Sättigungsspannung collector-emitter saturation voltage	$I_{\text{C}} = 400\text{A}, V_{\text{GE}} = 15\text{V}, T_{vj} = 25^\circ\text{C}$ $I_{\text{C}} = 400\text{A}, V_{\text{GE}} = 15\text{V}, T_{vj} = 125^\circ\text{C}$	$V_{\text{CE sat}}$	-	3,40	4,25	V
Gate-Schwellenspannung gate threshold voltage	$I_{\text{C}} = 40 \text{ mA}, V_{\text{CE}} = V_{\text{GE}}, T_{vj} = 25^\circ\text{C}$	$V_{\text{GE(th)}}$	4,2	5,1	6,0	V
Eingangskapazität input capacitance	$f = 1\text{MHz}, T_{vj} = 25^\circ\text{C}, V_{\text{CE}} = 25\text{V}, V_{\text{GE}} = 0\text{V}$	C_{ies}	-	50	-	nF
Rückwirkungskapazität reverse transfer capacitance	$f = 1\text{MHz}, T_{vj} = 25^\circ\text{C}, V_{\text{CE}} = 25\text{V}, V_{\text{GE}} = 0\text{V}$	C_{res}	-	2,7	-	nF
Gateladung gate charge	$V_{\text{GE}} = -15\text{V} \dots +15\text{V}, V_{\text{CE}} = 1800\text{V}$	Q_{G}	-	8	-	μC
Kollektor-Emitter Reststrom collector-emitter cut-off current	$V_{\text{CE}} = 3300\text{V}, V_{\text{GE}} = 0\text{V}, T_{vj} = 25^\circ\text{C}$ $V_{\text{CE}} = 3300\text{V}, V_{\text{GE}} = 0\text{V}, T_{vj} = 125^\circ\text{C}$	I_{CES}	-	0,05	4	mA mA
Gate-Emitter Reststrom gate-emitter leakage current	$V_{\text{CE}} = 0\text{V}, V_{\text{GE}} = 20\text{V}, T_{vj} = 25^\circ\text{C}$	I_{GES}	-	-	400	nA

prepared by: Jürgen Göttert	date of publication : 08.06.99
approved by: Chr. Lübke; 20.07.99	revision: 2

Technische Information / Technical Information

IGBT-Module
IGBT-Modules

FF 400 R 33 KF2

eupec



Datenblatt data sheet

Charakteristische Werte / Characteristic values

Transistor / Transistor

			min.	typ.	max.	
Einschaltverzögerungszeit (ind. Last) turn on delay time (inductive load)	$I_C = 400 \text{ A}, V_{CC} = 1800 \text{ V}$	$t_{d,on}$	-	370	-	ns
	$V_{GE} = \pm 15 \text{ V}, R_G = 3,6 \ \Omega, C_{GE} = 68 \text{ nF}, T_{vj} = 25^\circ \text{ C}$		-	350	-	ns
	$V_{GE} = \pm 15 \text{ V}, R_G = 3,6 \ \Omega, C_{GE} = 68 \text{ nF}, T_{vj} = 125^\circ \text{ C}$		-	350	-	ns
Anstiegszeit (induktive Last) rise time (inductive load)	$I_C = 400 \text{ A}, V_{CC} = 1800 \text{ V}$	t_r	-	250	-	ns
	$V_{GE} = \pm 15 \text{ V}, R_G = 3,6 \ \Omega, C_{GE} = 68 \text{ nF}, T_{vj} = 25^\circ \text{ C}$		-	270	-	ns
	$V_{GE} = \pm 15 \text{ V}, R_G = 3,6 \ \Omega, C_{GE} = 68 \text{ nF}, T_{vj} = 125^\circ \text{ C}$		-	270	-	ns
Abschaltverzögerungszeit (ind. Last) turn off delay time (inductive load)	$I_C = 400 \text{ A}, V_{CC} = 1800 \text{ V}$	$t_{d,off}$	-	1550	-	ns
	$V_{GE} = \pm 15 \text{ V}, R_G = 3,6 \ \Omega, C_{GE} = 68 \text{ nF}, T_{vj} = 25^\circ \text{ C}$		-	1700	-	ns
	$V_{GE} = \pm 15 \text{ V}, R_G = 3,6 \ \Omega, C_{GE} = 68 \text{ nF}, T_{vj} = 125^\circ \text{ C}$		-	1700	-	ns
Fallzeit (induktive Last) fall time (inductive load)	$I_C = 400 \text{ A}, V_{CC} = 1800 \text{ V}$	t_f	-	200	-	ns
	$V_{GE} = \pm 15 \text{ V}, R_G = 3,6 \ \Omega, C_{GE} = 68 \text{ nF}, T_{vj} = 25^\circ \text{ C}$		-	200	-	ns
	$V_{GE} = \pm 15 \text{ V}, R_G = 3,6 \ \Omega, C_{GE} = 68 \text{ nF}, T_{vj} = 125^\circ \text{ C}$		-	200	-	ns
Einschaltverlustenergie pro Puls turn-on energy loss per pulse	$I_C = 400 \text{ A}, V_{CC} = 1800 \text{ V}, V_{GE} = 15 \text{ V}$ $R_G = 3,6 \ \Omega, C_{GE} = 68 \text{ nF}, T_{vj} = 125^\circ \text{ C}, L_S = 60 \text{ nH}$	E_{on}	-	960	-	mWs
Abschaltverlustenergie pro Puls turn-off energy loss per pulse	$I_C = 400 \text{ A}, V_{CC} = 1800 \text{ V}, V_{GE} = 15 \text{ V}$ $R_G = 3,6 \ \Omega, C_{GE} = 68 \text{ nF}, T_{vj} = 125^\circ \text{ C}, L_S = 60 \text{ nH}$	E_{off}	-	510	-	mWs
Kurzschlußverhalten SC Data	$t_p \leq 10 \mu\text{sec}, V_{GE} \leq 15 \text{ V}$ $T_{vj} \leq 125^\circ \text{ C}, V_{CC} = 2500 \text{ V}, V_{CEmax} = V_{CES} - L_{sCE} \cdot di/dt$	I_{SC}	-	2000	-	A
Modulinduktivität stray inductance module		L_{sCE}	-	25	-	nH
Modul-Leitungswiderstand, Anschlüsse - Chip lead resistance, terminals - chip	$T = 25^\circ \text{ C}$	R_{CC+EE}	-	0,37	-	m Ω

Charakteristische Werte / Characteristic values

Diode / Diode

			min.	typ.	max.	
Durchlaßspannung forward voltage	$I_F = 400 \text{ A}, V_{GE} = 0 \text{ V}, T_{vj} = 25^\circ \text{ C}$	V_F	-	2,80	3,50	V
	$I_F = 400 \text{ A}, V_{GE} = 0 \text{ V}, T_{vj} = 125^\circ \text{ C}$		-	2,80	3,50	V
Rückstromspitze peak reverse recovery current	$I_F = 400 \text{ A}, -di_F/dt = 1200 \text{ A}/\mu\text{sec}$	I_{RM}	-	330	-	A
	$V_R = 1800 \text{ V}, V_{GE} = -10 \text{ V}, T_{vj} = 25^\circ \text{ C}$		-	350	-	A
	$V_R = 1800 \text{ V}, V_{GE} = -10 \text{ V}, T_{vj} = 125^\circ \text{ C}$		-	350	-	A
Sperrverzögerungsladung recovered charge	$I_F = 400 \text{ A}, -di_F/dt = 1200 \text{ A}/\mu\text{sec}$	Q_r	-	235	-	μAs
	$V_R = 1800 \text{ V}, V_{GE} = -10 \text{ V}, T_{vj} = 25^\circ \text{ C}$		-	440	-	μAs
	$V_R = 1800 \text{ V}, V_{GE} = -10 \text{ V}, T_{vj} = 125^\circ \text{ C}$		-	440	-	μAs
Abschaltenergie pro Puls reverse recovery energy	$I_F = 400 \text{ A}, -di_F/dt = 1200 \text{ A}/\mu\text{sec}$	E_{rec}	-	245	-	mWs
	$V_R = 1800 \text{ V}, V_{GE} = -10 \text{ V}, T_{vj} = 25^\circ \text{ C}$		-	500	-	mWs
	$V_R = 1800 \text{ V}, V_{GE} = -10 \text{ V}, T_{vj} = 125^\circ \text{ C}$		-	500	-	mWs



**Datenblatt
data sheet**

Thermische Eigenschaften / Thermal properties

			min.	typ.	max.	
Innerer Wärmewiderstand thermal resistance, junction to case	Transistor / transistor, DC	R_{thJC}	-	-	0,026	K/W
	Diode/Diode, DC		-	-	0,051	K/W
Übergangs-Wärmewiderstand thermal resistance, case to heatsink	pro Modul / per module $\lambda_{paste} = 1 \text{ W/m}^2\text{K} / \lambda_{grease} = 1 \text{ W/m}^2\text{K}$	R_{thCK}	-	0,006	-	K/W
Höchstzulässige Sperrschichttemperatur maximum junction temperature		T_{vj}	-	-	150	°C
Betriebstemperatur operation temperature		T_{op}	-40	-	125	°C
Lagertemperatur storage temperature		T_{stg}	-40	-	125	°C

Mechanische Eigenschaften / Mechanical properties

Gehäuse, siehe Anlage case, see appendix					
Material Modulgrundplatte material of module baseplate				AISiC	
Innere Isolation internal insulation				AlN	
Kriechstrecke creepage distance				32,2	mm
Luftstrecke clearance				19,1	mm
CTI comperative tracking index				> 400	
Anzugsdrehmoment f. mech. Befestigung mounting torque		M1		5	Nm
Anzugsdrehmoment f. elektr. Anschlüsse terminal connection torque	terminals M4	M2		2	Nm
	terminals M8			8 .. 10	Nm
Gewicht weight		G		1100	g

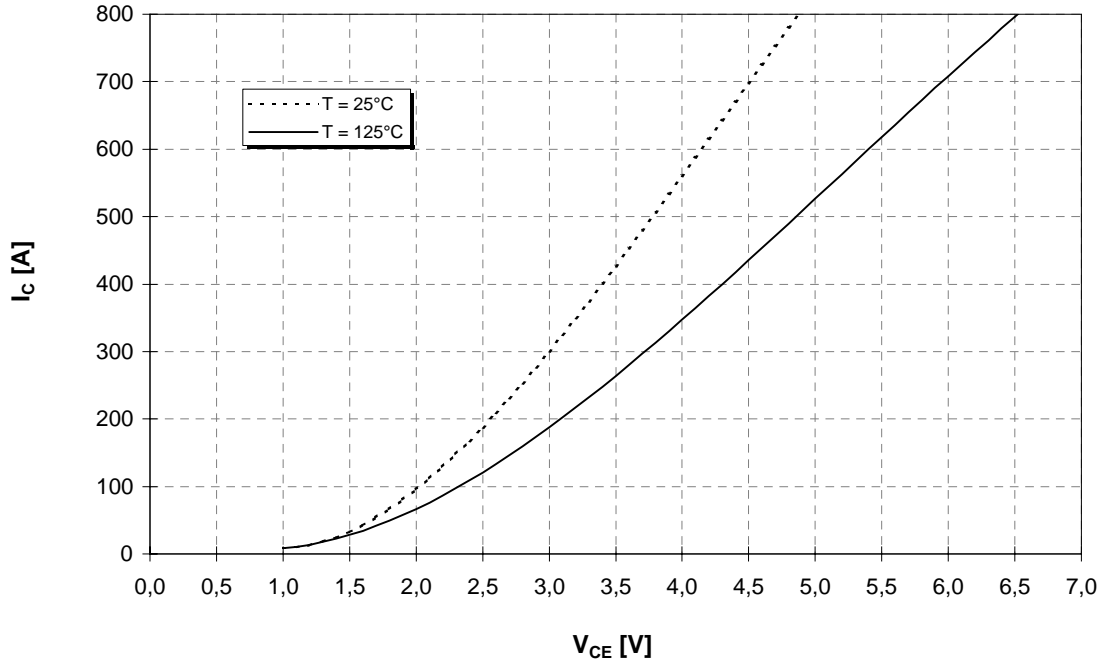
Mit dieser technischen Information werden Halbleiterbauelemente spezifiziert, jedoch keine Eigenschaften zugesichert. Sie gilt in Verbindung mit den zugehörigen Technischen Erläuterungen.

This technical information specifies semiconductor devices but promises no characteristics. It is valid in combination with the belonging technical notes.



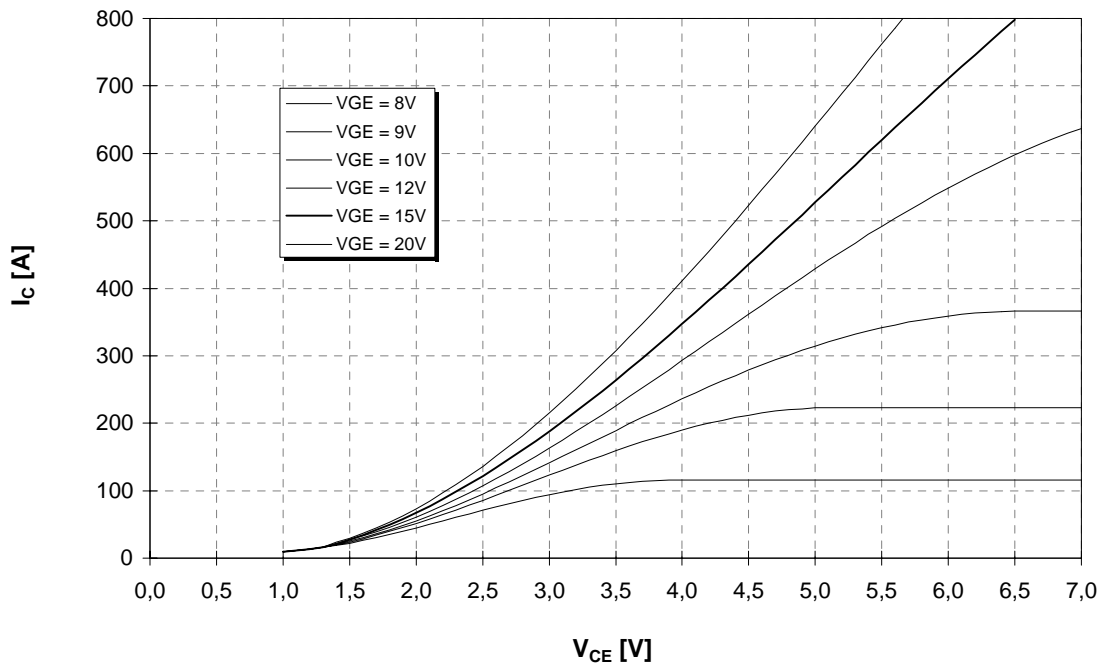
Ausgangskennlinie (typisch)
Output characteristic (typical)

$I_C = f(V_{CE})$
 $V_{GE} = 15V$



Ausgangskennlinienfeld (typisch)
Output characteristic (typical)

$I_C = f(V_{CE})$
 $T_{vj} = 125°C$

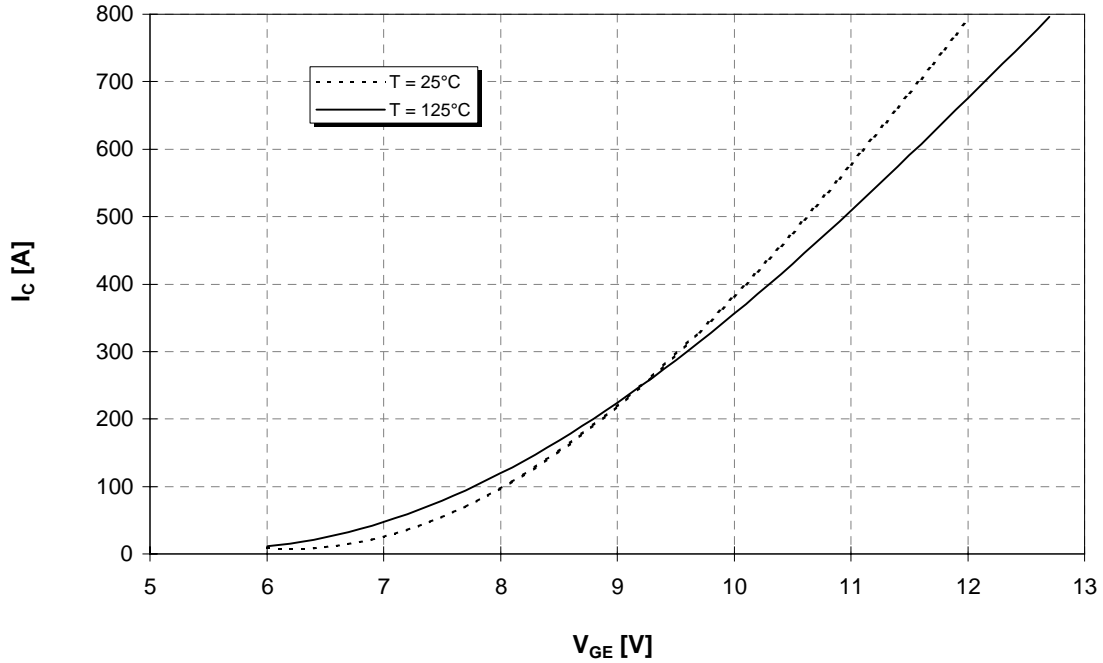




Datenblatt
data sheet

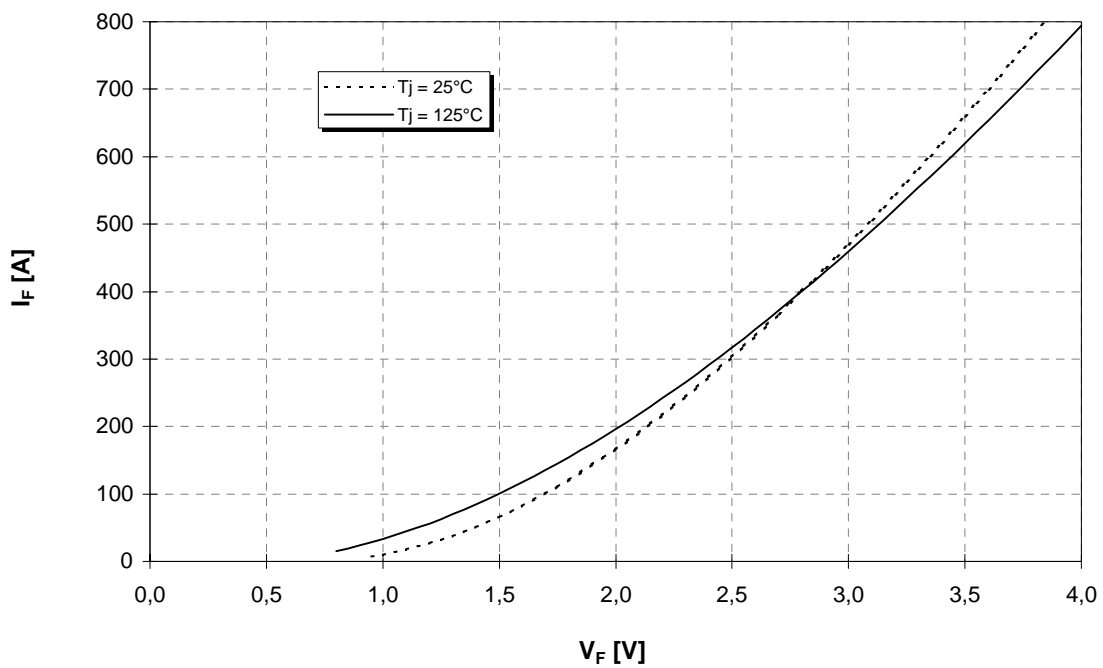
Übertragungscharakteristik (typisch)
Transfer characteristic (typical)

$I_C = f(V_{GE})$
 $V_{CE} = 20V$



Durchlaßkennlinie der Inversdiode (typisch)
Forward characteristic of inverse diode (typical)

$I_F = f(V_F)$



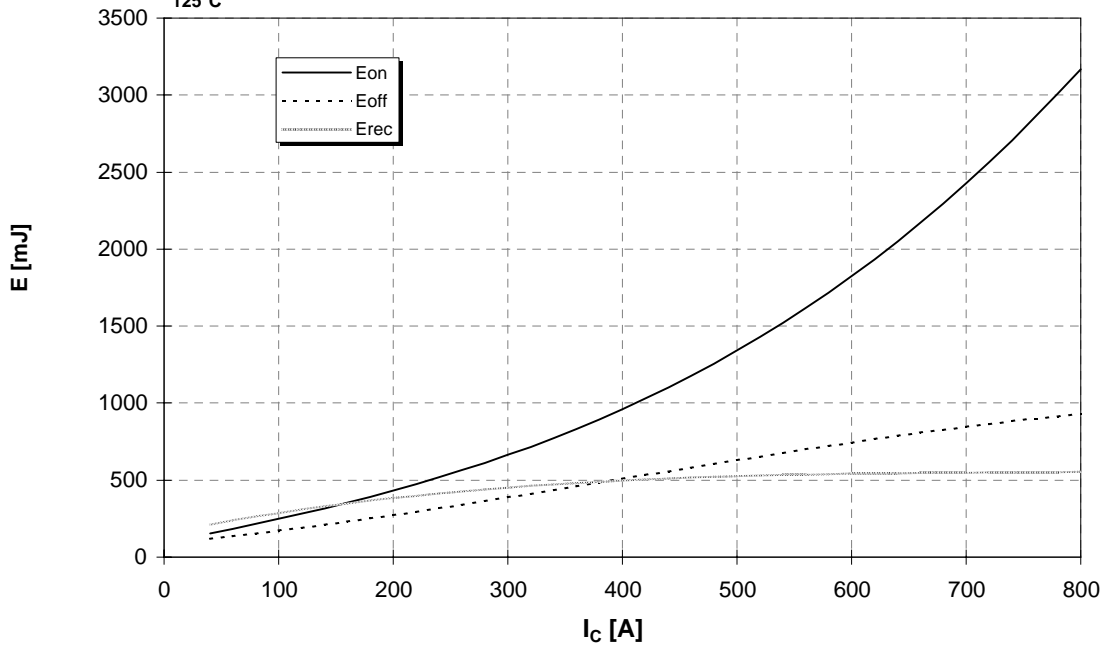


Datenblatt
data sheet

Schaltverluste (typisch)
Switching losses (typical)

$E_{on} = f(I_C)$, $E_{off} = f(I_C)$, $E_{rec} = f(I_C)$

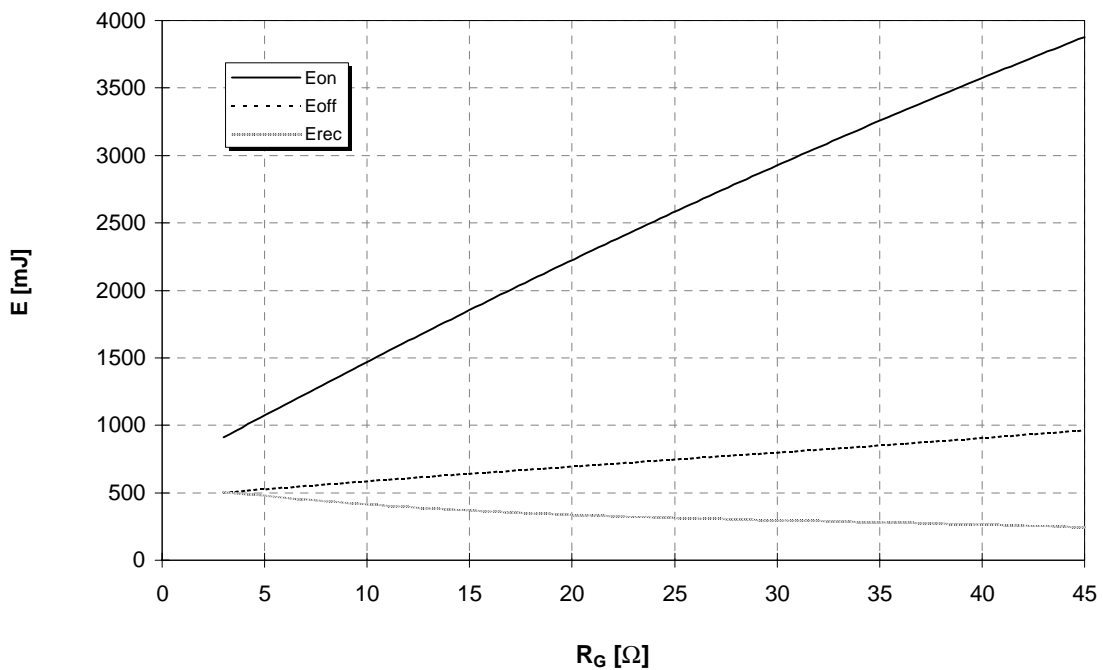
$R_{G,on} = 3,6 \Omega$, $R_{G,off} = 3,6 \Omega$, $C_{GE} = 68 \text{ nF}$, $V_{CE} = 1800\text{V}$, $T_j = 125^\circ\text{C}$



Schaltverluste (typisch)
Switching losses (typical)

$E_{on} = f(R_G)$, $E_{off} = f(R_G)$, $E_{rec} = f(R_G)$

$I_C = 400 \text{ A}$, $C_{GE} = 68 \text{ nF}$, $V_{CE} = 1800\text{V}$, $T_j = 125^\circ\text{C}$



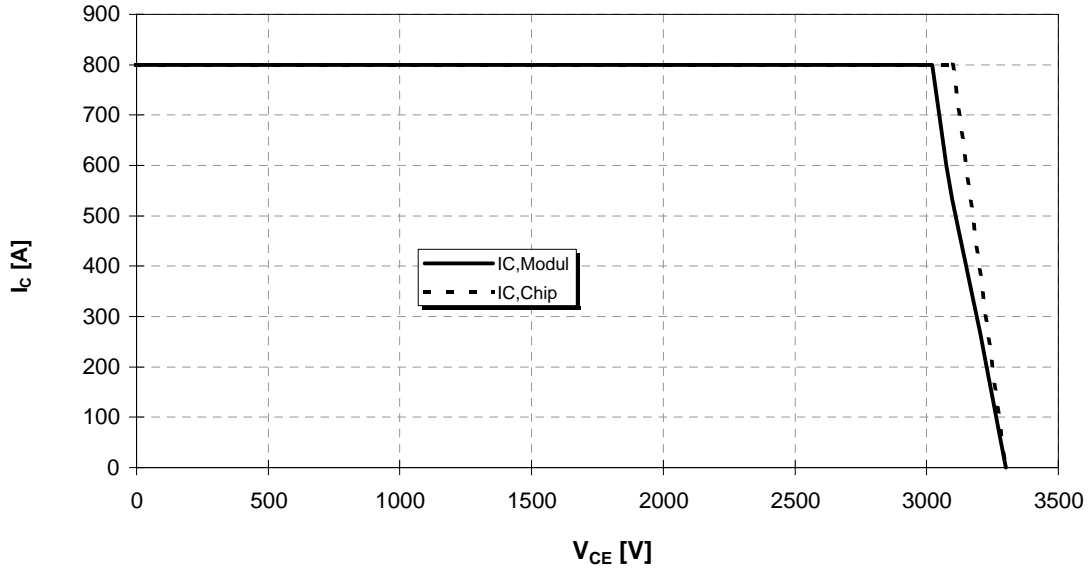


Datenblatt
data sheet

Sicherer Arbeitsbereich IGBT (RBSOA)
Reverse bias safe operation area IGBT (RBSOA)

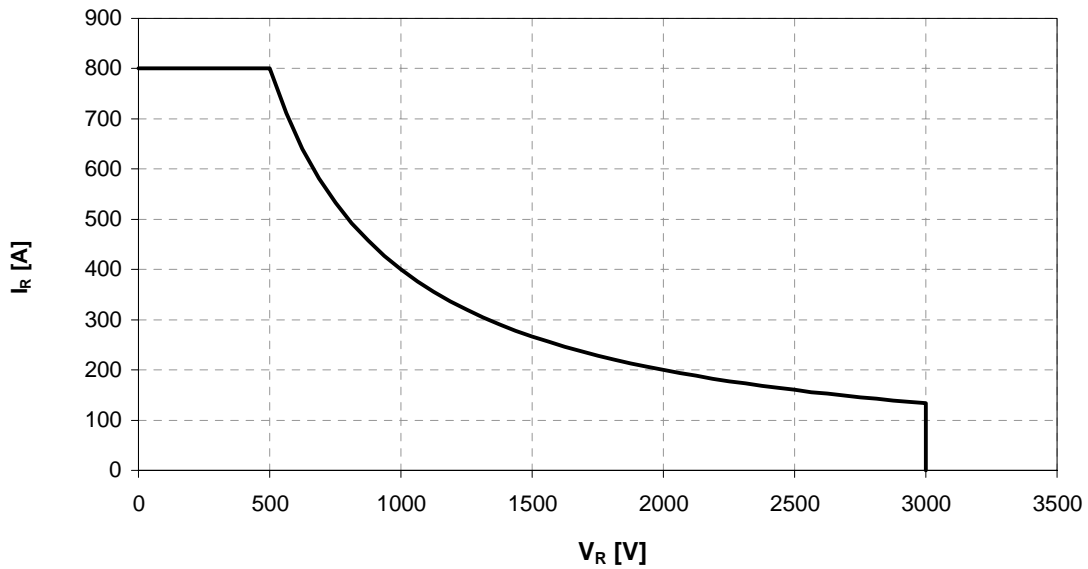
$R_{G,off} = 3,6 \Omega$, $C_{GE} = 68 \text{ nF}$

$T_{vj} = 125^\circ\text{C}$



Sicherer Arbeitsbereich Diode (SOA)
safe operation area Diode (SOA)

$T_{vj} = 125^\circ\text{C}$

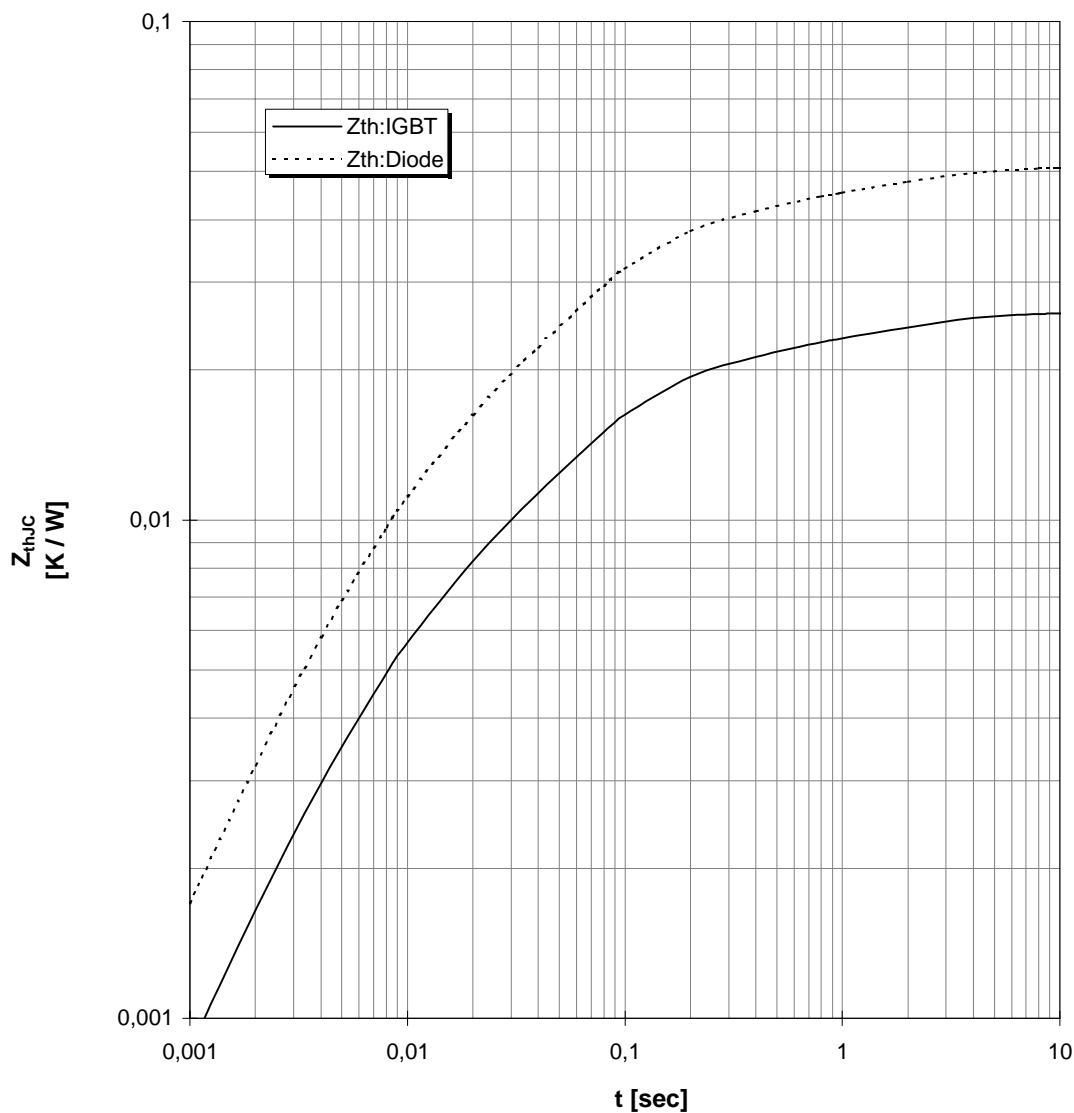




Datenblatt
data sheet

Transienter Wärmewiderstand
Transient thermal impedance

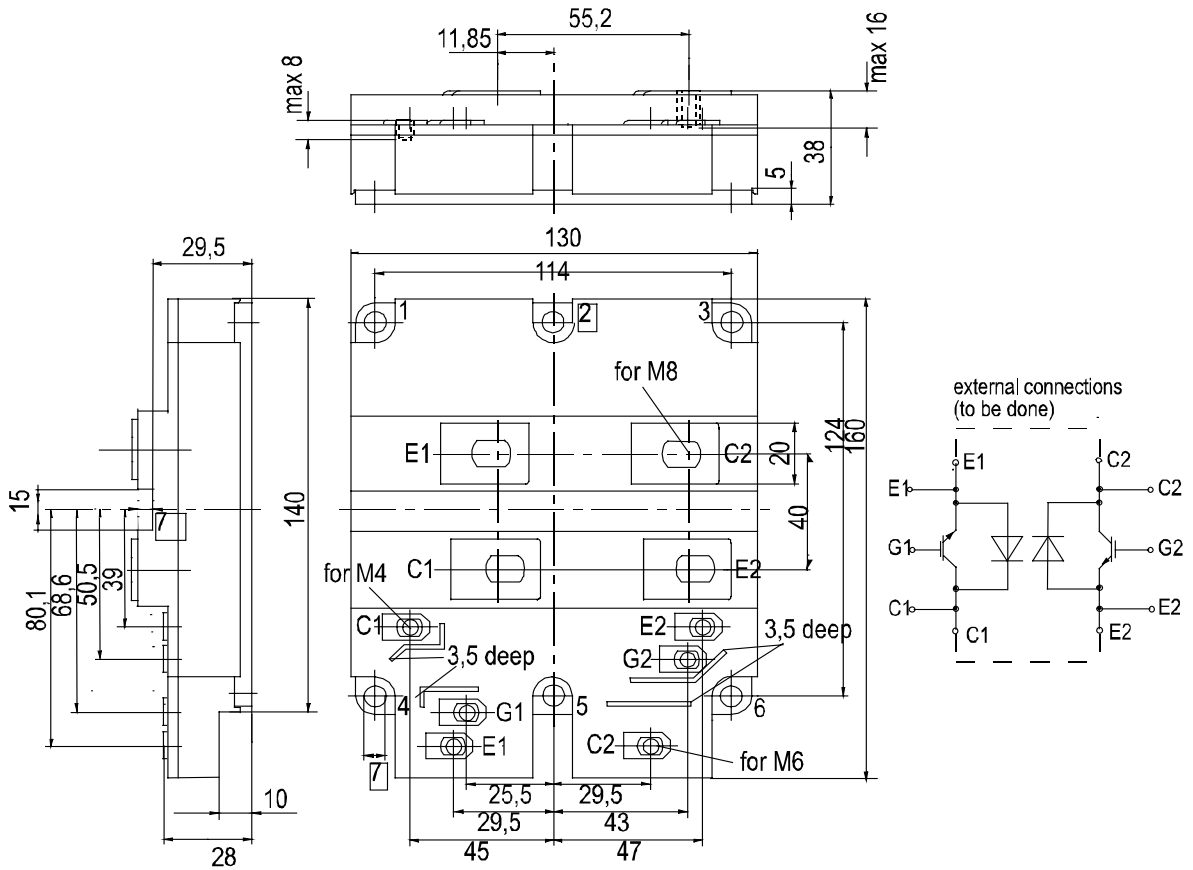
$$Z_{thJC} = f(t)$$



i	1	2	3	4
r_i [K/kW] : IGBT	4,76	12,98	3,86	4,40
τ_i [sec] : IGBT	0,0068	0,0642	0,3209	2,0212
r_i [K/kW] : Diode	9,34	25,47	7,57	8,63
τ_i [sec] : Diode	0,0068	0,0642	0,3209	2,0212



Gehäusemaße / Schaltbild
Package outline / Circuit diagram



Terms & Conditions of Usage

Attention

The present product data is exclusively subscribed to technically experienced staff. This Data Sheet is describing the specification of the products for which a warranty is granted exclusively pursuant the terms and conditions of the supply agreement. There will be no guarantee of any kind for the product and its specifications. Changes to the Data Sheet are reserved.

You and your technical departments will have to evaluate the suitability of the product for the intended application and the completeness of the product data with respect to such application. Should you require product information in excess of the data given in the Data Sheet, please contact your local Sales Office via "www.eupec.com / sales & contact".

Warning

Due to technical requirements the products may contain dangerous substances. For information on the types in question please contact your local Sales Office via "www.eupec.com / sales & contact".