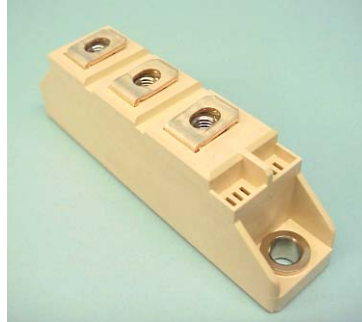
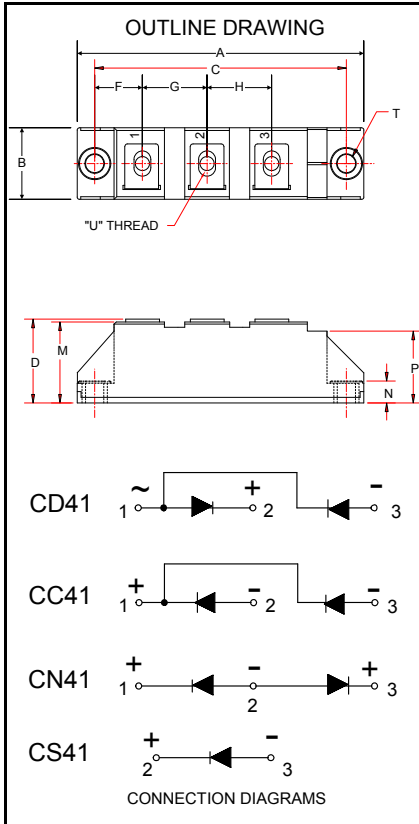


Powerex, Inc., 173 Pavilion Lane, Youngwood, PA 15697 (724) 925-7272
www.pwr.com

POW-R-BLOK™
Dual & Single Diode Isolated Module
100 Amperes / Up to 1800 Volts



**CD41__99B, CN41__99B
CS41__99B**
**Dual & Single Diode Isolated
POW-R-BLOK™ Module**
100 Amperes / Up to 1800 Volts

Description:

Powerex Dual Diode & Single Diode Modules are designed for use in applications requiring rectification and isolated packaging. The modules are isolated for easy mounting with other components on a common heatsink. POW-R-BLOK™ has been tested and recognized by the Underwriters Laboratories.

Features:

- Electrically Isolated Heatsinking
- DBC Alumina (Al₂O₃) Insulator
- Copper Baseplate
- Low Thermal Impedance for Improved Current Capability
- UL Recognized (E78240)

Benefits:

- No Additional Insulation Components Required
- Easy Installation
- No Clamping Components Required
- Reduce Engineering Time

Ordering Information:

Select the complete nine digit module part number from the table below.
Example: CD411699B is a 1600 Volt, 100 Ampere Dual Diode Isolated POW-R-BLOK™ Module

Type	Voltage Volts (x100)	Current Amperes	Version
CD41	08	99	B
CN41	12	(100 A)	
CS41	14		
	16		
	18		

Outline Dimensions

Dimension	Inches	Millimeters
A	3.66	93
B	0.79	20
C	3.15	80
D	1.18	30
F	0.61	15.5
G	0.79	20
H	0.79	20
M	1.16	29.4
N	0.31	8
P	0.94	24
T	0.25	6.4
U	M5	M5

Note: Dimensions are for reference only.

Applications:

- Power Supplies
- Bridge Circuits
- AC & DC Motor Drives
- Battery Supplies
- Large IGBT Circuit Front Ends
- Lighting Control
- Heat & Temperature Control
- Welders



**CD41__99B, CN41__99B
CS41__99B**

Powerex, Inc., 173 Pavilion Lane, Youngwood, PA 15697 (724) 925-7272
www.pwr.com

POW-R-BLOK™
Dual & Single Diode Isolated Module
100 Amperes / Up to 1800 Volts

Absolute Maximum Ratings

Characteristics	Conditions	Symbol		Units
Repetitive Peak Reverse Blocking Voltage		V_{RRM}	up to 1800	V
Non-Repetitive Peak Reverse Blocking Voltage ($t < 5$ msec)		V_{RSM}	$V_{RRM} + 100$	V
RMS Forward Current	DC Conduction, $T_C=90^\circ\text{C}$	$I_{F(RMS)}$	157	A
Average Forward Current	180° Conduction, $T_C=100^\circ\text{C}$	$I_{F(AV)}$	100	A
Peak One Cycle Surge Current, Non-Repetitive	60 Hz, 100% V_{RRM} reapplied, $T_J = 150^\circ\text{C}$	I_{FSM}	1,780	A
	60 Hz, No V_{RRM} reapplied, $T_J = 150^\circ\text{C}$	I_{FSM}	2,110	A
	50 Hz, 100% V_{RRM} reapplied, $T_J = 150^\circ\text{C}$	I_{FSM}	1,700	A
	50 Hz, No V_{RRM} reapplied, $T_J = 150^\circ\text{C}$	I_{FSM}	2,020	A
I^2t for Fusing for One Cycle	8.3 ms, 100% V_{RRM} reapplied, $T_J = 150^\circ\text{C}$	I^2t	13,190	A^2sec
	8.3 ms, No V_{RRM} reapplied, $T_J = 150^\circ\text{C}$	I^2t	18,650	A^2sec
	10 ms, 100% V_{RRM} reapplied, $T_J = 150^\circ\text{C}$	I^2t	14,450	A^2sec
	10 ms, No V_{RRM} reapplied, $T_J = 150^\circ\text{C}$	I^2t	20,430	A^2sec
Operating Temperature		T_J	-40 to +150	$^\circ\text{C}$
Storage Temperature		T_{stg}	-40 to +150	$^\circ\text{C}$
Max. Mounting Torque, M6 Mounting Screw on Terminals			25	in. – Lb.
			3	Nm
Max. Mounting Torque, Module to Heatsink			44	in. – Lb.
			5	Nm
Module Weight, Typical			95	g
			3.35	Oz
V Isolation @ 25C	50-60 Hz, 1 second	V_{rms}	3500	V
Circuit To Base, All Terminals Shorted Together				

Information is based upon manufacturers testing and projected capabilities.
This information is subject to change without notice.
The manufacturer makes no claim as to suitability for use, reliability, capability,
or future availability of this product.



**CD41__99B, CN41__99B
CS41__99B**

Powerex, Inc., 173 Pavilion Lane, Youngwood, PA 15697 (724) 925-7272
www.pwr.com

POW-R-BLOK™
Dual & Single Diode Isolated Module
100 Amperes / Up to 1800 Volts

Electrical Characteristics, $T_J=25^\circ\text{C}$ unless otherwise specified

Characteristics	Symbol	Test Conditions	Min.	Max.	Units
Repetitive Peak Reverse Leakage Current	I_{RRM}	Up to 1800V, $T_J=150^\circ\text{C}$		10	mA
Peak On-State Voltage	V_{FM}	$T_J=25^\circ\text{C}$, $I_{FM}=300\text{A}$, 180° Conduction		1.35	V
Threshold Voltage, Low-level	$V_{(FO)1}$	$T_J = 150^\circ\text{C}$, $I = 16.7\% \times \pi I_{F(AV)}$ to $\pi I_{F(AV)}$		0.85	V
Slope Resistance, Low-level	r_{T1}			1.3	$\text{m}\Omega$

Thermal Characteristics

Characteristics	Symbol	Test Conditions	Max.	Units
Thermal Resistance, Junction to Case	$R_{\theta J-C}$	Per Module, both conducting	0.175	$^\circ\text{C/W}$
		Per Junction, both conducting	0.35	$^\circ\text{C/W}$
Thermal Resistance, Case to Sink Lubricated	$R_{\theta C-S}$	Per Module	0.1	$^\circ\text{C/W}$



**CD41_99B, CN41_99B
CS41_99B**

Powerex, Inc., 173 Pavilion Lane, Youngwood, PA 15697 (724) 925-7272
www.pwr.com

**POW-R-BLOK™
Dual & Single Diode Isolated Module
100 Amperes / Up to 1800 Volts**

