

A70Q

SEMICONDUCTOR PROTECTION FUSES



A70Q Amp-trap® Semiconductor Protection fuses were developed for inverter applications requiring extremely low I^2t . A70Q fuses provide the most responsive protection for applications not required to sustain heavy overloads. Typically used for replacement purposes.

Features/Benefits

- **Lowest I^2t** of any fuse in this voltage rating for best overall protection
- **700V AC, 650V DC rating** allows protection of greater variety of circuits
- **Solid fill technology** for extra reliability in performance

Ratings

- **AC:** 35-600A
700VAC, 100kA I.R.
- **DC:** 35-600A
650VDC, 100kA I.R.
L/R=10ms

Approvals

- UL Recognized Component
- AC: Guide No. JFHR2
- DC: Tested to UL Standard 198L Parameters (35-600A)

HIGHLIGHTS:

- Extremely Fast Acting
- Current Limiting
- Lowest I^2t

APPLICATIONS:

- Protection of inverters and other equipment requiring the best AC or DC protection in this voltage range



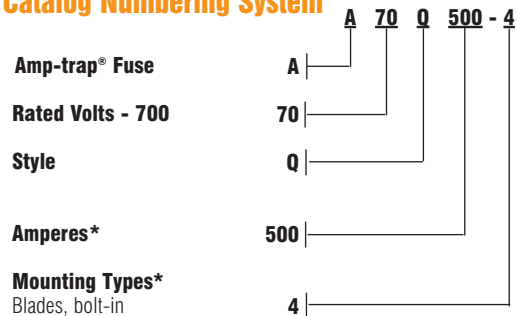
Single Pole Fuse Blocks for A70Q Fuses

FUSE AMPERE RATING	FUSE BLOCK CATALOG NUMBER
35-100	P243C
125-400	P266A
450-600	P266F



*Contact technical services for application data.

Catalog Numbering System



* For ampere ratings and types not listed, consult the factory.

A70Q

SEMICONDUCTOR PROTECTION FUSES

Standard Fuse Ampere Ratings, Catalog Numbers

AMPERE RATING	CATALOG NUMBER	AMPERE RATING	CATALOG NUMBER	AMPERE RATING	CATALOG NUMBER
35	A70Q35-4	100	A70Q100-4	350	A70Q350-4
40	A70Q40-4	125	A70Q125-4	400	A70Q400-4
50	A70Q50-4	150	A70Q150-4	450	A70Q450-4
60	A70Q60-4	175	A70Q175-4	500	A70Q500-4
70	A70Q70-4	200	A70Q200-4	600	A70Q600-4
80	A70Q80-4	250	A70Q250-4		
90	A70Q90-4	300	A70Q300-4		

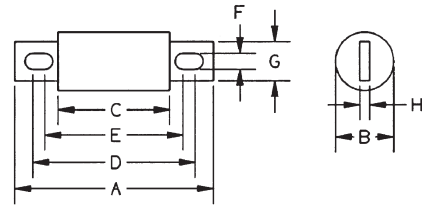


Figure 1

For ampere ratings and styles not listed, call Technical Services.



Dimensions

CATALOG NUMBER	MOUNTING TYPE	DIMENSIONS - INCHES (mm)							
		A	B	C	D	E	F	G	H
A70Q35 to 60	4	4.37 (111)	1.22 (31.0)	1.96 (49.8)	3.69 (93.7)	2.91 (73.9)	.34 (8.6)	1.00 (25.4)	.19 (4.8)
A70Q70 to 100	4	4.37 (111)	1.22 (31.0)	1.96 (49.8)	3.69 (93.7)	2.91 (73.9)	.41 (10.4)	1.00 (25.4)	.19 (4.8)
A70Q125 to 200	4	5.09 (129)	1.50 (38.1)	1.96 (49.8)	4.16 (106)	2.91 (73.9)	.41 (10.4)	1.00 (25.4)	.25 (6.4)
A70Q250 to 400	4	5.09 (129)	2.00 (50.8)	1.96 (49.8)	4.00 (102)	2.94 (74.7)	.56 (14.2)	1.50 (38.1)	.25 (6.4)
A70Q450 to 600	4	7.09 (180)	2.50 (63.5)	1.96 (49.8)	5.72 (145)	3.25 (82.6)	.56 (14.2)	2.00 (50.8)	.38 (9.7)