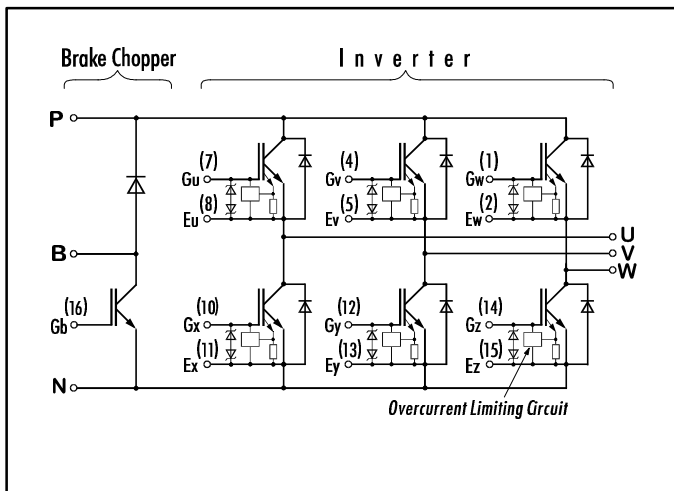


## IGBT MODULE ( N series )

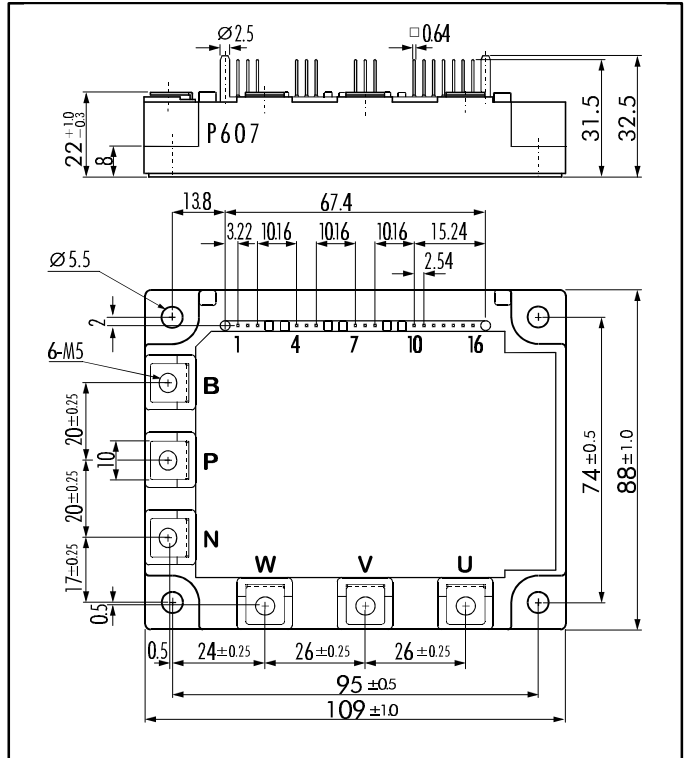
### ■ Features

- Including Brake Chopper
- Square RBSOA
- Low Saturation Voltage
- Overcurrent Limiting Function  
( 4 ~ 5 Times Rated Current )

### ■ Equivalent Circuit



### ■ Outline Drawing



### ■ Absolute Maximum Ratings ( T<sub>c</sub>=25°C )

Items		Symbols	Test Conditions	Ratings	Units
Inverter	Collector-Emitter Voltage	V <sub>CES</sub>		1200	V
	Gate -Emitter Voltage	V <sub>GES</sub>		± 20	
	Collector Current	I <sub>C</sub>	Continuous	40	A
		I <sub>C PULSE</sub>	1ms	80	
	Collector Power Dissipation	P <sub>C</sub>	1 device	320	W
Brake Chopper	Collector-Emitter Voltage	V <sub>CES</sub>		1200	V
	Gate -Emitter Voltage	V <sub>GES</sub>		± 20	
	Collector Current	I <sub>C</sub>	Continuous	15	A
		I <sub>C PULSE</sub>	1ms	30	
	Collector Power Dissipation	P <sub>C</sub>	1 device	120	W
	Repetitive Peak Reverse Voltage	V <sub>RRM</sub>		1200	V
	Average Forward Current	I <sub>F(AV)</sub>		1	A
Surge Current	I <sub>FSM</sub>	10ms	50		
Operating Junction Temperature	T <sub>j</sub>		+150	°C	
Storage Temperature	T <sub>Stg</sub>		-40 ~ +125		
Isolation Voltage	V <sub>ISO</sub>	A.C. 1min.	2500	V	
Mounting Screw Torque *1			3.5	Nm	
Terminal Screw Torque *1			3.5		

Note: \*1:Recommendable Value; 2.5 ~ 3.5 Nm (M5)