

IGBT MODULE (S-Series)

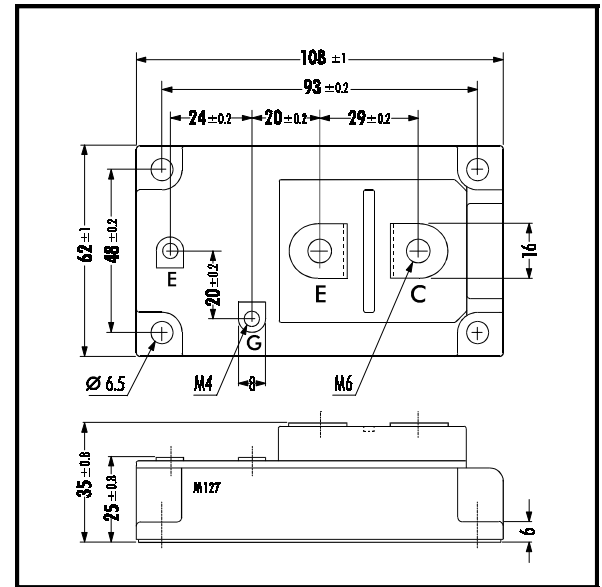
■ Features

- NPT-Technology
- Square SC SOA at $10 \times I_C$
- High Short Circuit Withstand-Capability
- Small Temperature Dependence of the Turn-Off Switching Loss
- Low Losses And Soft Switching

■ Applications

- High Power Switching
- A.C. Motor Controls
- D.C. Motor Controls
- Uninterruptible Power Supply

■ Outline Drawing



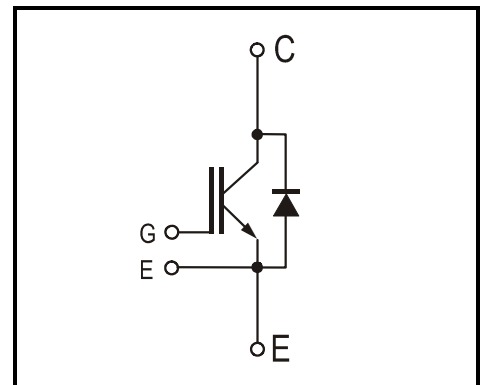
■ Maximum Ratings and Characteristics

• Absolute Maximum Ratings ($T_c=25^\circ\text{C}$)

Items	Symbols	Ratings	Units		
Collector-Emitter Voltage	V_{CES}	1200	V		
Gate -Emitter Voltage	V_{GES}	± 20			
Collector Current	I_C	400 / 300	A		
	1ms	25°C / 80°C		$I_{C\ PULSE}$	800 / 600
	Continuous			$-I_C$	300
	1ms			$-I_{C\ PULSE}$	600
Max. Power Dissipation	P_C	2100	W		
Operating Temperature	T_j	+150	°C		
Storage Temperature	T_{stg}	-40 ~ +125			
Isolation Voltage *1	A.C. 1min.	V_{is}	2500	V	
Screw Torque	Mounting *2	3.5	Nm		
	Terminals *2	4.5			
	Terminals *2	1.7			

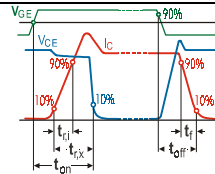
Note: 1*: All Terminals should be connected together when isolation test will be done.
2*: Recommendable Value: Mounting 2.5 - 3.5 Nm (M5) or (M6); Terminal 3.5 - 4.5 Nm (M6), 1.3 - 1.7 Nm (M4)

■ Equivalent Circuit



• Electrical Characteristics (at $T_j=25^\circ\text{C}$)

Items	Symbols	Test Conditions	Min.	Typ.	Max.	Units
Zero Gate Voltage Collector Current	I_{CES}	$V_{GE}=0V$ $V_{CE}=1200V$			4.0	mA
Gate-Emitter Leakage Current	I_{GES}	$V_{CE}=0V$ $V_{GE}=\pm 20V$			800	nA
Gate-Emitter Threshold Voltage	$V_{GE(th)}$	$V_{GE}=20V$ $I_C=300mA$	5.5	7.2	8.5	V
Collector-Emitter Saturation Voltage	$V_{CE(sat)}$	$V_{GE}=15V$ $I_C=300A$		$T_j = 25^\circ\text{C}$ 2.3 $T_j = 125^\circ\text{C}$ 2.8	2.6	
Input Capacitance	C_{ies}	$V_{GE}=0V$		36'000		pF
Output Capacitance	C_{oes}	$V_{CE}=10V$		7'500		
Reverse Transfer Capacitance	C_{res}	$f=1MHz$		6'600		
Turn-on Time	t_{ON}	$V_{CC} = 600V$		0.35	1.2	μs
	$t_{r,x}$	$I_C = 300A$		0.25	0.6	
	$t_{r,i}$	$V_{GE} = \pm 15V$		0.10		
Turn-off Time	t_{OFF}	$R_G = 2.7\Omega$		0.45	1.0	μs
	t_f	Inductive Load		0.08	0.3	
Diode Forward On-Voltage	V_F	$I_F=300A$; $V_{GE}=0V$	$T_j = 25^\circ\text{C}$ 2.3 $T_j = 125^\circ\text{C}$ 2.0		3.0	V
Reverse Recovery Time	t_{rr}	$I_F=300A$			350	ns



• Thermal Characteristics

Items	Symbols	Test Conditions	Min.	Typ.	Max.	Units
Thermal Resistance	$R_{th(j-c)}$	IGBT			0.06	°C/W
	$R_{th(j-c)}$	Diode			0.17	
	$R_{th(c-f)}$	With Thermal Compound		0.0125		